

WHEATON SPORT CENTER **evolution**  
KIDS TENNIS

TENNIS DEVELOPMENT FOR THE COMPLETE PLAYER

• GROUP LESSONS  
TENNIS WHIZZ, RED, ORANGE,  
GREEN, PERFORMANCE GREEN  
Progressive Skill Development  
Tactical Awareness

• PRIVATE LESSONS

• SUMMER CAMPS

LEARN

PRACTICE

CONNECT

COMPETE

• PARENT/CHILD TOURNAMENTS  
RED, ORANGE, GREEN,  
PERFORMANCE GREEN

• PIZZA/MOVIE NIGHT  
RED, ORANGE, GREEN,  
PERFORMANCE GREEN

• HALL OF FAME  
RED, ORANGE, GREEN

• HOLIDAY CAMPS  
RED, ORANGE, GREEN,  
PERFORMANCE GREEN

• PLAYDAYS  
RED, ORANGE, GREEN,  
PERFORMANCE GREEN

• WORLD TOUR EVENTS:  
RED, ORANGE, GREEN,  
PERFORMANCE GREEN

• IN-HOUSE TOURNAMENTS:  
RED, ORANGE, GREEN,  
PERFORMANCE GREEN

• JUNIOR TEAM TENNIS:  
ORANGE, GREEN,  
PERFORMANCE GREEN

• USTA YOUTH PROGRESSION  
TOURNAMENTS:  
ORANGE, GREEN,  
PERFORMANCE GREEN

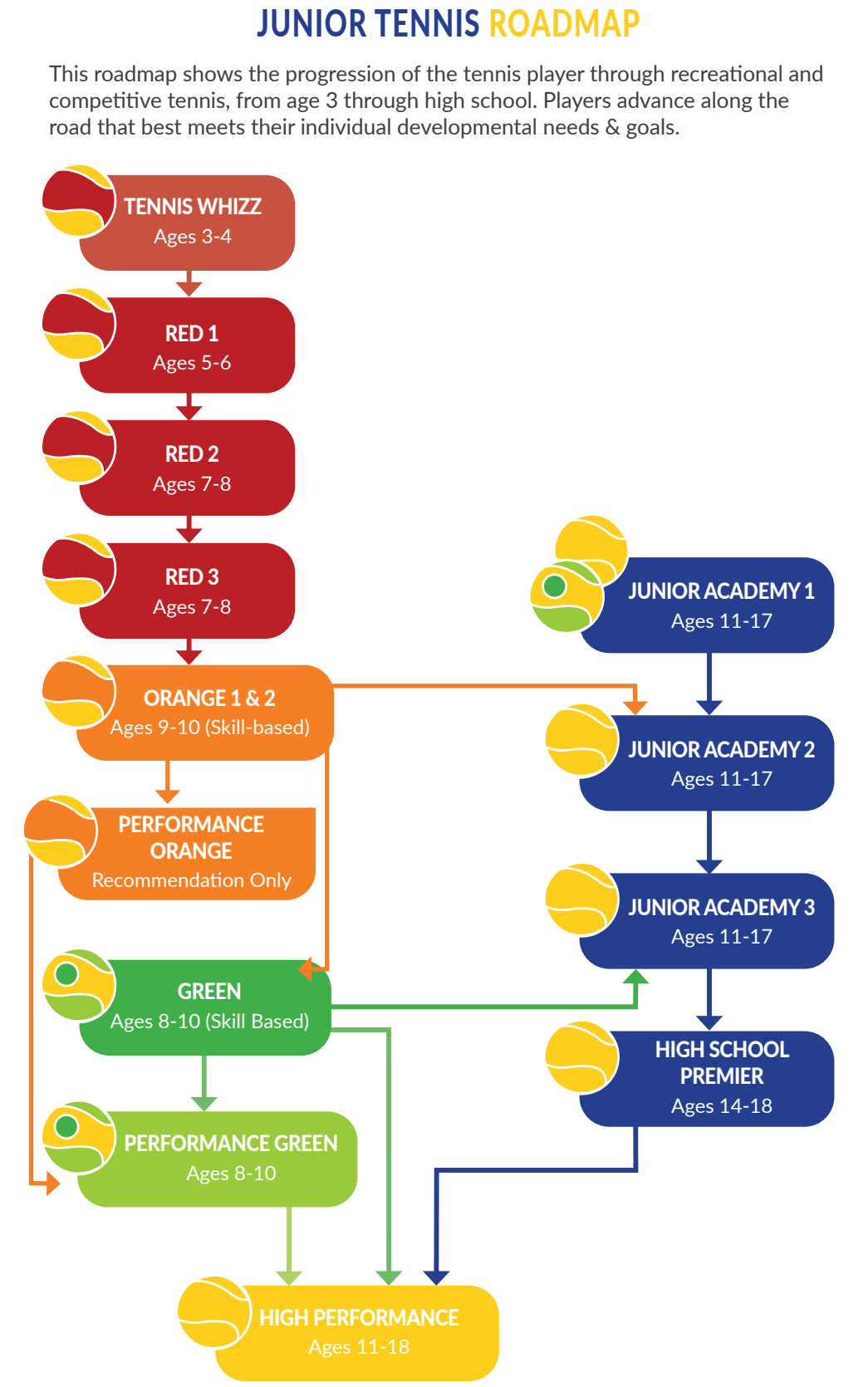
**evolution**  
KIDS TENNIS

HALL OF FAME

WSC acknowledges players who show their commitment to their tennis development. Players receive a Hall of Fame certificate by participating in a variety of our tennis programs and activities listed above. Collect 4 certificates (June through May) and you will be inducted into the Hall of Fame. Hall of Fame members are recognized by:

- Photo on the Hall of Fame Wall
- Personalized Hall of Fame T-shirt
- Exclusive Hall of Fame Tournament & Induction Ceremony
- Photo & Bio in the WSC Hall of Fame Booklet

For more details, contact [tennis@wheatonsportcenter.com](mailto:tennis@wheatonsportcenter.com)



**PTR**  
PTR PROUD FACILITY

Wheaton Sport Center has achieved PTR Proud Facility Status from the Professional Tennis Registry, which is awarded for upholding Professional tennis standards.

2025-07-15

**evolution**  
KIDS TENNIS



FALL 2025

AUG 11 - OCT 19, 2025

10-WEEK SESSION

 RED

 ORANGE

 GREEN

 PERFORMANCE GREEN

Tennis Manager: Lori Mills | [lmills@wheatonsportcenter.com](mailto:lmills@wheatonsportcenter.com)

Director of Tennis Development & High Performance Director:  
Lisane Swartwood | [lswartwood@wheatonsportcenter.com](mailto:lswartwood@wheatonsportcenter.com)

Evolution Kids Tennis Coordinator: Matt Roszkowski | [mroszkowski@wheatonsportcenter.com](mailto:mroszkowski@wheatonsportcenter.com)

**Wheaton**  
Sport Center  
Your Neighborhood Club

630-690-0887 | [www.wheatonsportcenter.com](http://www.wheatonsportcenter.com)



evolution  
KIDS TENNIS

Aug 11 - Oct 19 , 2025 (10 week session)

TENNIS WHIZZ

AGES 3-4

The Tennis Whizz curriculum teaches basic tennis and fundamental movement skills needed to enter Red 1. Each class uses a story-telling approach to fully engage children in the lesson that includes skill-building around letters, numbers, shapes, and social development as we address the growth of the entire young child.

DAY	TIME
MON	4:00pm-4:30pm
SAT	11:30am-12:00pm
SUN	1:30pm-2:00pm

All first-time participants receive an Evolution tennis racquet.

RED 1, 2, 3 LEVELS

AGES 5-8 (MAX 6 PARTICIPANTS)

**RED 1** is an introduction to tennis mechanics by way of game-based play to continue development of agility, balance, and coordination while learning forehands, backhands, volleys and serves. (Ages 5-6) max 6

**RED 2** focuses on ground-stroke development, volleys, serves, and progression of rallying skills. (Ages 7-8) max 6

**RED 3** concentrates on improved rallying, court angles, court awareness, increased groundstroke development, and consistency. (Ages 7-8) max 6

DAY	TIME
TUE	4:00pm-5:00pm
WED	6:00pm-7:00pm
THU	4:00pm-5:00pm
SAT	12:00pm-1:00pm
SUN	2:00pm-3:00pm

DAY	TIME
TUE	4:00pm-5:00pm
WED	6:00pm-7:00pm
THU	4:00pm-5:00pm
SAT	12:00pm-1:00pm
SUN	2:00pm-3:00pm

DAY	TIME
TUE	4:00pm-5:00pm
WED	6:00pm-7:00pm
THU	4:00pm-5:00pm
SAT	12:00pm-1:00pm
SUN	2:00pm-3:00pm

ORANGE 1, 2 LEVELS

AGES 9+ (MAX 6 PARTICIPANTS)

**ORANGE 1** is for students ages 9-10 who have had little or no previous tennis instruction. Focus is on basic tennis groundstrokes, volleys, and serves. (Ages 9+) max 6

**ORANGE 2** is for students who have progressed through Red 3/Orange 1 and are ready for the 60' court. Focus is on court movement, groundstroke accuracy & consistency, volleys, serves and extended rallying/match play. (Ages 9+) max 6

DAY	TIME
MON	4:30pm-6:00pm
WED	4:30pm-6:00pm
SAT	1:00pm-2:30pm
SUN	3:00pm-4:30pm

DAY	TIME
MON	4:30pm-6:00pm
WED	4:30pm-6:00pm
THU	5:00pm-6:30pm
SAT	1:00pm-2:30pm

PERFORMANCE ORANGE

RECOMMENDATION REQUIRED

Orange ball players that are ready to take their game to the next level will work on accelerated skills and tactics emphasizing training and competition. This program requires recommendation from Evolution Kids Tennis Coordinator Matt Roszkowski Interested players should contact mroszkowski@wheatonsportcenter.com

DAY	TIME
MON	4:30pm-6:00pm



evolution  
KIDS TENNIS

GROUP LESSONS

GREEN & PERFORMANCE GREEN LEVELS

AGES 9+ (SKILL-BASED)

**GREEN** is a transitional class for players moving from the 60' court to the regulation court, using Green Dot balls. Focus is on more advanced tennis technique, grips, and increased shot variety and match strategy.

DAY	TIME
TUE	5:00pm-6:30pm
THU	5:00pm-6:30pm
SAT	2:30pm-4:00pm

**PERFORMANCE GREEN** is an advanced Green program for players who have completed WSC 100 Under Green class requirements. Players train for competitive tournaments and must be ready to commit to 2 group training days per week + 10 summer camp training days. Players are expected to compete in Jr. Team Tennis, in-house match play, and USTA Tournament Events.

DAY	TIME
TUES	5:00pm-6:30pm
THURS	5:00pm-6:30pm



evolution  
KIDS TENNIS

UPCOMING EVENTS

- Sept 5
- Oct 25

World Tour New York  
Halloween Spooktacular




 is a USTA Accredited Program

 find yourself in the game

COURT WARRIOR HONOR AWARDS

Tennis is a game where the result is not completely in your hands. Playing your best does not mean that you will always win. We know that focusing on positive behaviors that are in our control will help our athletes better handle the ups and downs of competition and improve both as players and as people. We believe these behaviors should be emphasized in every part of the tennis environment. Our Honor Band system recognizes players who are working at and displaying these behaviors. A different colored Honor Band is awarded monthly to select players. Bands are only awarded for exceptional behavior only so wear it with pride!



**RESPECT** - Supports others, focused, listens to coaches

**TRAIN** - Works hard, well prepared, independent

**EXPLORE** - Solves problems, creative, asks questions

**COMPETE** - Maximum effort, loves challenge, displays good sportsmanship






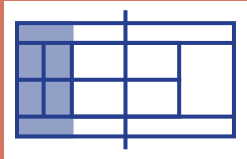
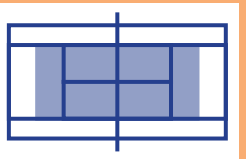
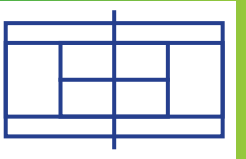
evolution  
KIDS TENNIS

FEES & POLICIES

LEVEL	# DAYS/WEEK	SESSION FEES		
		TENNIS MEMBER	HEALTH CLUB MEMBER	GUEST
Tennis Whizz (ages 3-4)	1 day/week	\$100	\$110	\$137
	2 days/week	\$170	\$190	\$245
Red 1 (ages 5-6) Red 2 (ages 7-8) Red 3 (ages 7-8)	1 day/week	\$200	\$220	\$239
	2 days/week	\$345	\$385	\$423
	3 days/week	\$462	\$522	\$579
Orange 1 (ages 8-10) Orange 2 (ages 9-10)	1 day/week	\$287	\$320	\$353
	2 days/week	\$500	\$566	\$632
	3 days/week	\$670	\$769	\$868
Green (ages 8-10)*	1 day/week	\$287	\$320	\$353
	2 days/week	\$500	\$566	\$632
	3 days/week	\$670	\$769	\$868
Performance Green*	2 days/week	\$500	\$566	\$632

GROUP LESSON MAKE-UP & REFUND POLICIES

Students are responsible for attending the lesson for which they have registered. A maximum of 3 missed lessons may be made up per session with prior approval of the instructor. Student must email the instructor 24 hours prior to the missed lesson. **Lessons must be made up during the current session and are NOT guaranteed.** Approval for make up lesson is based on class space availability. Refunds are honored for any reason if notification is given 72 hours prior to the first lesson. After a lesson session has started, refunds are only given for illness or injury with a doctor's note. A \$10 fee per registrant will be charged for all refunds.

TENNIS COURT SIZES			
BALL	 <b>Red (felt or foam)</b> Moves slower & bounces lower than orange ball	 <b>Orange</b> Moves slower & bounces lower than green ball	 <b>Green</b> Slightly reduced bounce from yellow ball
COURT SIZE	 36' x 18'	 60' x 21' singles 60' x 27' doubles	 78' x 27' singles 78' x 36' doubles
NET HEIGHT	2'9"	3' center 3'6" at net posts	3' center 3'6" at net posts
RACQUET	Up to 23"	23" - 25"	25" - 27"